



Habitat selection of Mallards and American Black Ducks on eastern Long Island



Riley Stedman

Master's of Fish and Wildlife Biology and Management Candidate

SUNY College of Environmental Science and Forestry



Goals

- Selection between and importance of agricultural fields, freshwater wetlands, and saltmarshes
- Wintering habits vs. Migration habits



Mallard and black duck habitat selection



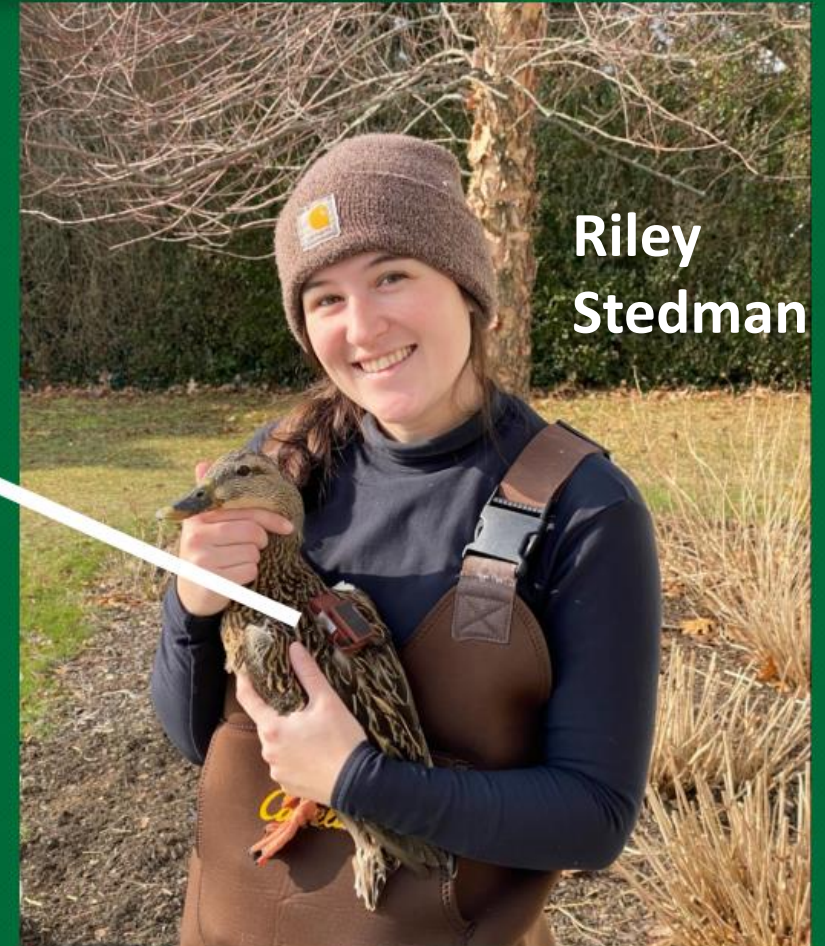
Ornitela OrniTrack-20 GPS/GSM transmitters with accelerometer

Position every 15 minutes

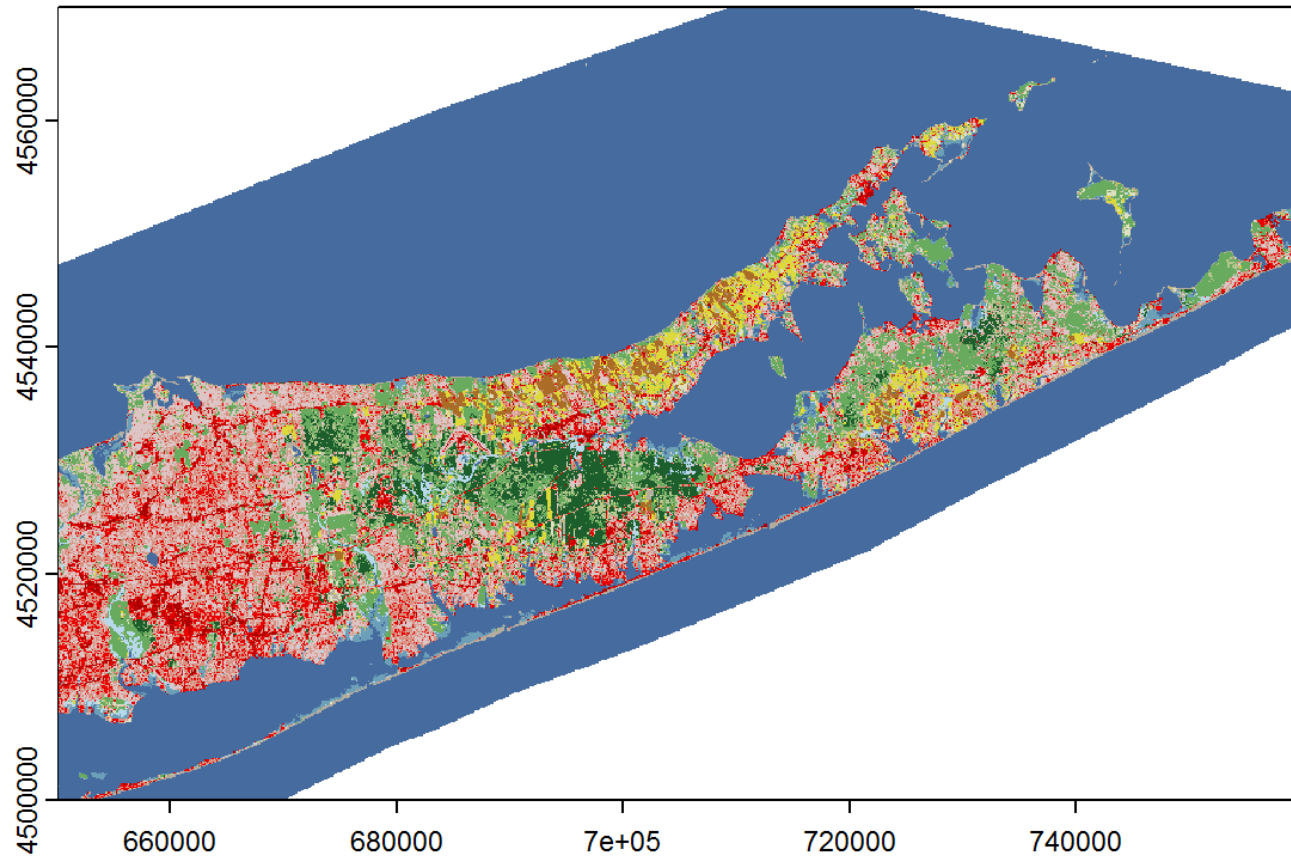
Behavior* every 10 minutes



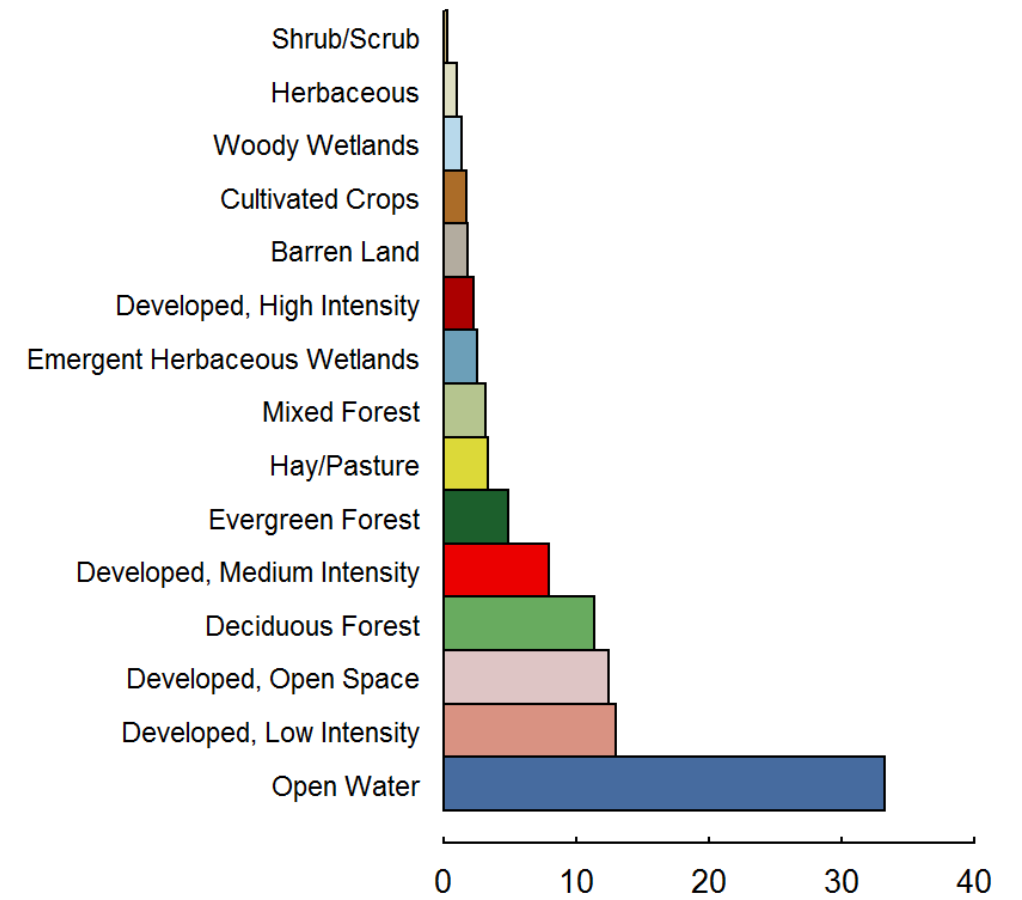
Solar powered

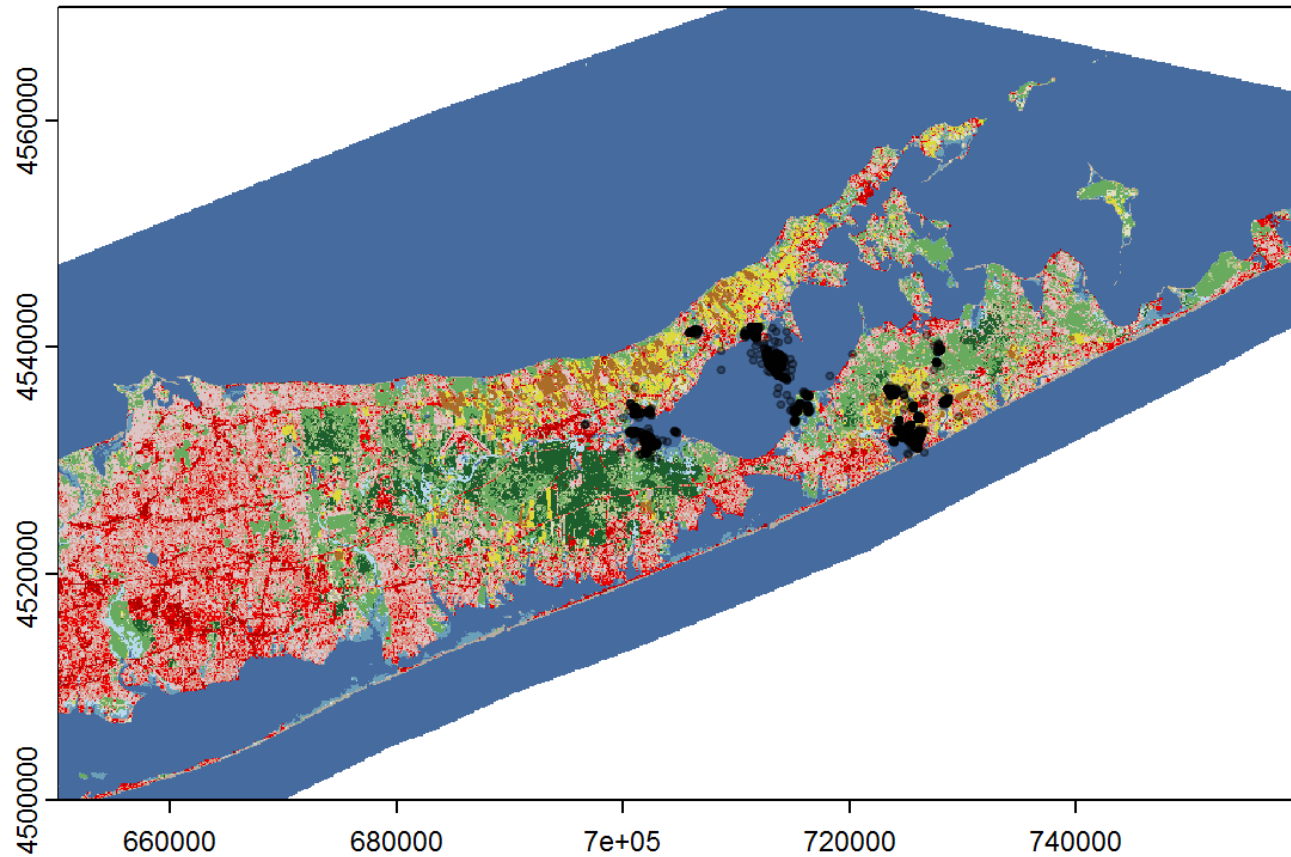


Riley
Stedman

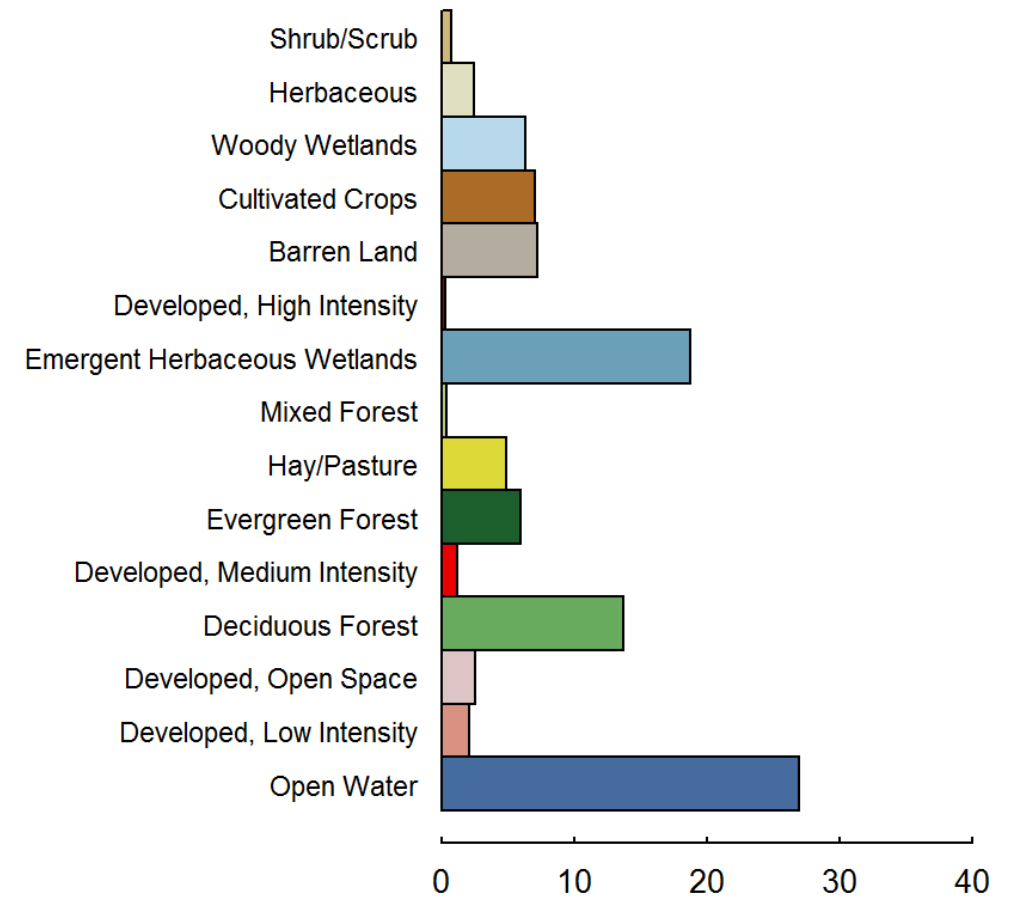


Available habitat



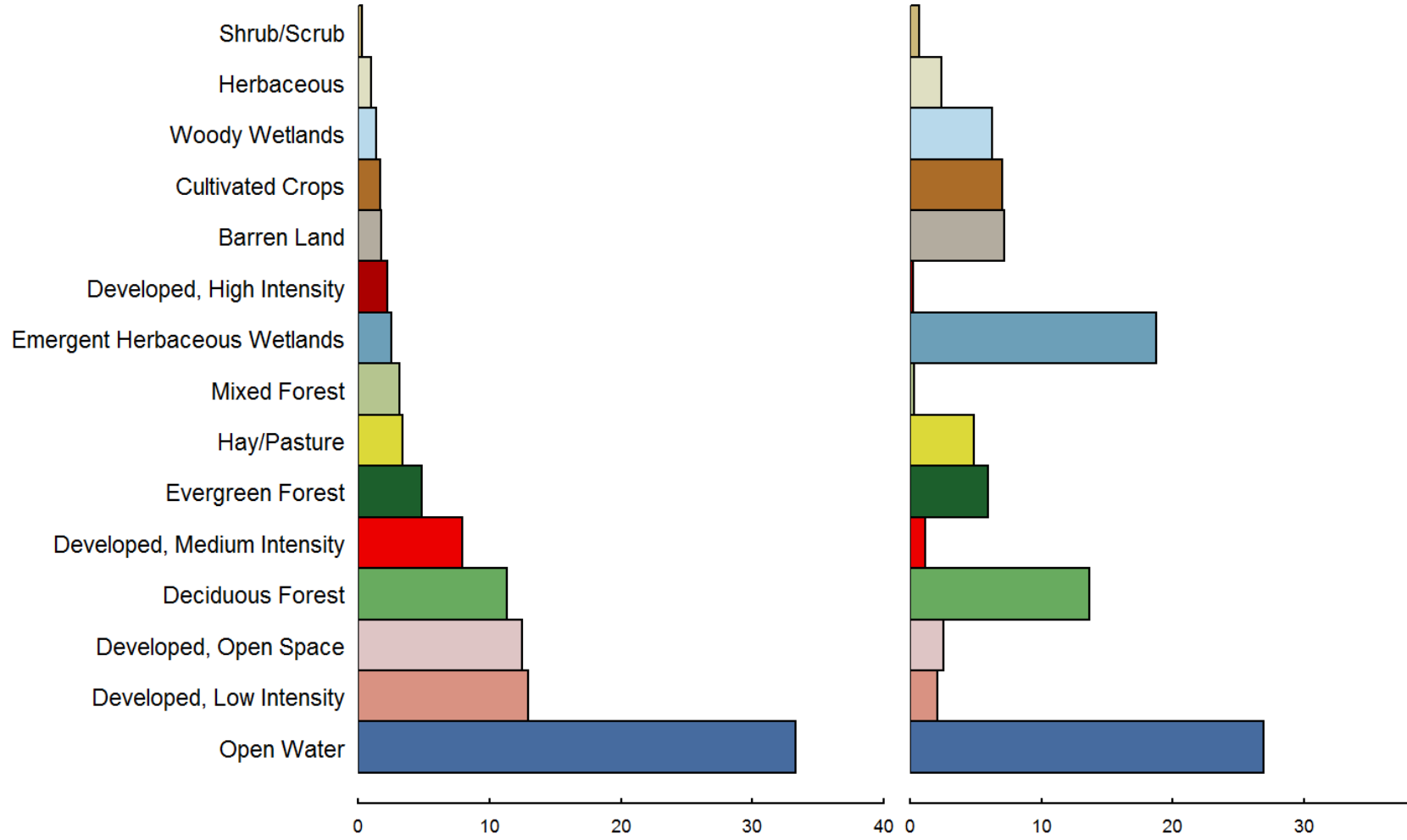


Used habitat

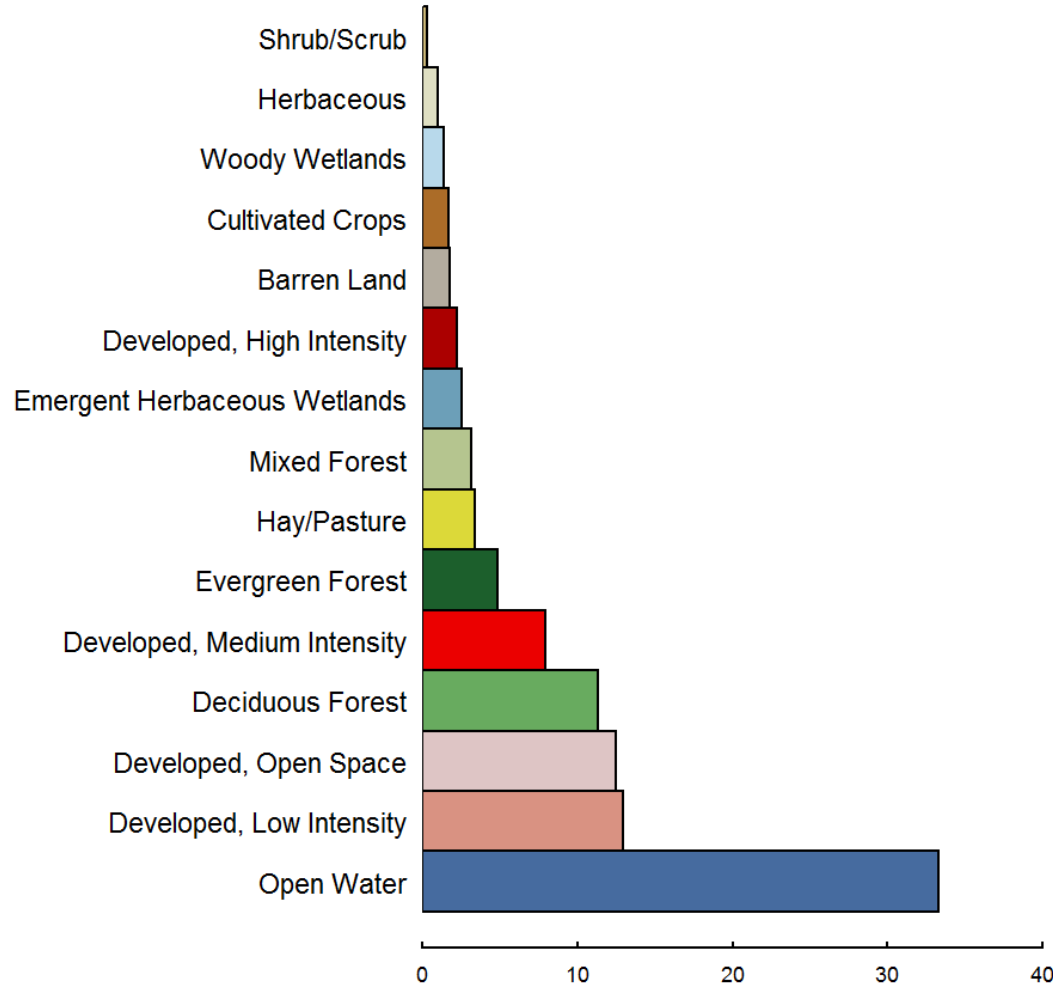


Available habitat

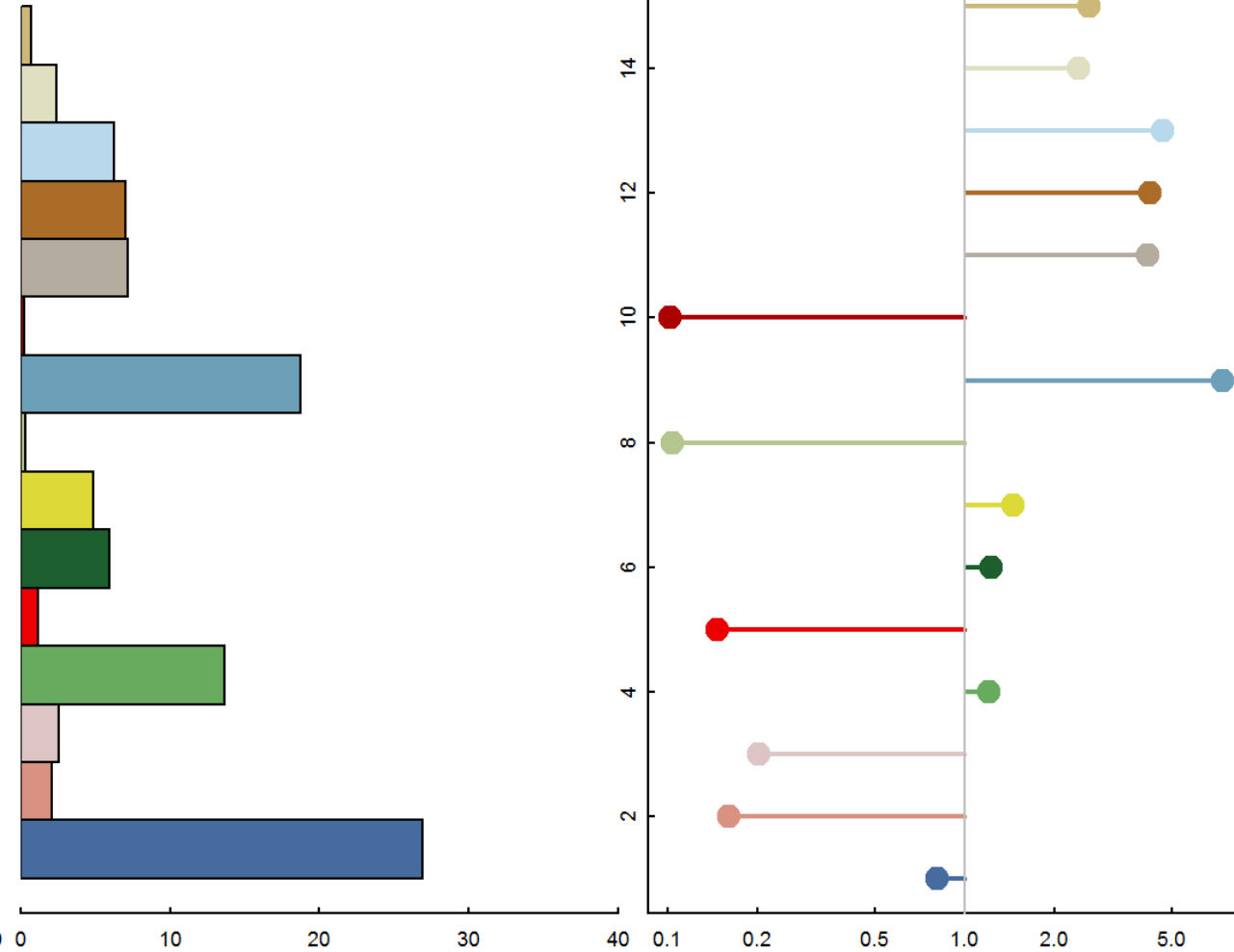
Used habitat



Available habitat



Used habitat



Preference

